



CANADA HOUSE

AT MILLENNIUM WATER

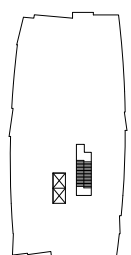
PLAN E4D

151 ATHLETES WAY

2 BEDROOM + FAMILY + FLEX + ENCLOSED BALCONY
 2156 SF LIVING
 259 SF BALCONY



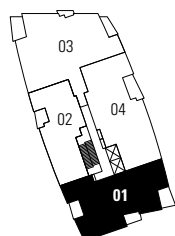
- 1 Miele gas cooktop
- 2 Sub-Zero refrigerator
- 3 Miele wall oven & Panasonic built-in microwave
- 4 Miele dishwasher
- 5 Eggersmann of Germany eco-wood cabinetry
- 6 Sub-Zero wine cooler
- 7 Cabina custom built walk-in closet from Italy



181 ATHLETES WAY



NORTH



151 ATHLETES WAY

4TH FLOOR

Washer/Dryer are optional items. Dimensions, sizes, areas, specifications, layouts and materials are approximate only and subject to change without notice. Floor plates will vary between floors and appliance brands and sizes are subject to change. Please see a sales representative for more details. E.&O.E.

