



# CANADA HOUSE

## AT MILLENNIUM WATER

### PLAN E2B

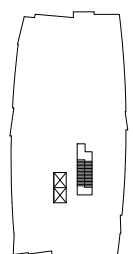
151 ATHLETES WAY

3 BEDROOM + FAMILY + FLEX + ENCLOSED BALCONY

2750 SF LIVING

273 SF BALCONY

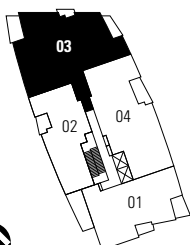
- 1 Miele 5-zone gas cooktop
- 2 Sub-Zero refrigerator
- 3 Miele wall oven & Miele speed oven
- 4 Miele dishwasher
- 5 Eggersmann of Germany eco-wood cabinetry
- 6 Miele built-in coffee maker with Miele warming drawer
- 7 Sub-Zero wine cooler
- 8 Cabina custom built walk-in closet from Italy



181 ATHLETES WAY



NORTH



151 ATHLETES WAY

2ND FLOOR

Washer/Dryer are optional items. Dimensions, sizes, areas, specifications, layouts and materials are approximate only and subject to change without notice. Floor plates will vary between floors and appliance brands and sizes are subject to change. Please see a sales representative for more details. E.&O.E.

